

**PREMIER CORPORATE SITES
AVAILABLE TO
THE GEORGIA DEPARTMENT
OF ECONOMIC DEVELOPMENT**

(+/- 46 ACRES)

**FUTURE DEVELOPMENT
(MULBERRY SQUARE)**

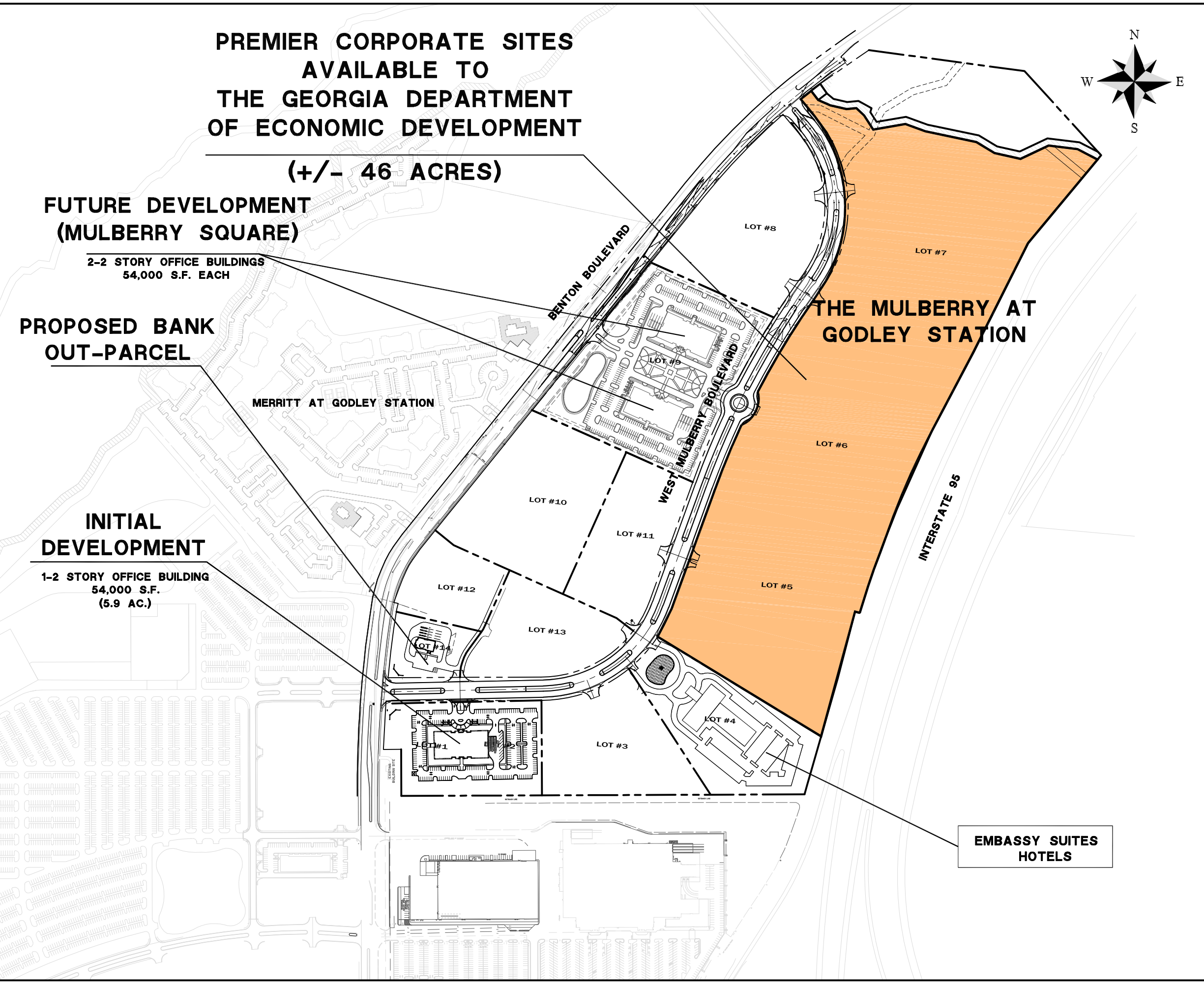
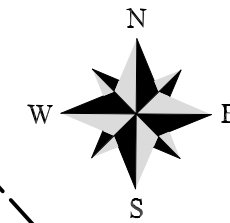
2-2 STORY OFFICE BUILDINGS
54,000 S.F. EACH

**PROPOSED BANK
OUT-PARCEL**

MERRITT AT GODLEY STATION

**INITIAL
DEVELOPMENT**

1-2 STORY OFFICE BUILDING
54,000 S.F.
(5.9 AC.)



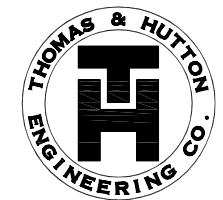
**PREMIER
CORPORATE SITES
THE MULBERRY AT
GODLEY STATION**

PREPARED FOR



THE FOXFIELD COMPANY

PREPARED BY



**THOMAS & HUTTON
ENGINEERING CO.**

50 PARK OF COMMERCE WAY
POST OFFICE BOX 2727
SAVANNAH, GA. 31402-2727 (912)234-5300

CHARLESTON, SC - MYRTLE BEACH, SC

PROJECT NO. - 12855

DATE - 6/1/2005

DISCLAIMER

THIS MAP ILLUSTRATES A GENERAL PLAN OF THE DEVELOPMENT WHICH IS FOR DISCUSSION PURPOSES ONLY, DOES NOT LIMIT OR BIND THE OWNER, AND IS SUBJECT TO CHANGE AND REVISION WITHOUT PRIOR WRITTEN NOTICE TO THE HOLDER. DIMENSIONS, BOUNDARIES AND POSITION LOCATIONS ARE FOR ILLUSTRATIVE PURPOSES ONLY AND ARE SUBJECT TO AN ACCURATE SURVEY AND PROPERTY DESCRIPTION.

GRAPHIC SCALE



(IN FEET)
1 inch = 200 ft.